

# IP CAMERA

## IPC-2T57SQD

- H.265 / H.264 / MJPEG
- 2MP (1920 × 1080)
- 20 ~ 30 M IR night view distance
- 3D DNR,WDR
- ICR auto switch, true day / night
- Support ROI coding
- Support smart phone, iPad, remote monitoring
- IP67 ingress protection
- PoE power supply

**RoHS** CE FC

# 2MP IP IR WATER-PROOF BULLET CAMERA



## IPC-2T57SQD

Camera	
Image Sensor	1 / 2.9 " CMOS
Image Size	1920 × 1080
Electronic Shutter	1 / 25 s ~ 1 / 100000 s
Min. Illumination	0.0035 lux@F1.2,AGC ON; 0 lux with IR
Lens	Board 2.8 mm @F2.0
Horizontal view Angle	107°
IR Distance	20~30 m
WDR	Digital WDR
Day & Night	ICR auto switch
BLC	YES
HLC	YES
Defog	YES
Digital DNR	3D DNR
Angle Adjustment	Pan: 0° ~360° ; Tilt:0° ~80° ; Rotation: 0° ~360°
Image	
Video Compression	H.265 / H.264 / MJPEG
H.264 Compression Standard	Main Profile@Leve4.1 High Tier
Resolution	1080P ( 1920 × 1080 ), 720P ( 1280 × 720 ), D1, CIF, 480 × 240
Main Stream (S1)	1080P / 720P @30fps
Sub Stream (S2)	D1 / CIF / 480 × 240 @30fps
Third Stream (S3)	-
Bit Rate	64 Kbps ~ 6 Mbps
Bit Rate Type	VBR / CBR
Image Settings	ROI, Saturation, Brightness, Chroma, Contrast,Wide Dynamic, Sharpen,NR,etc. adjustable through client software or web browser
ROI	Each ROI to be configured separately
Audio	
Audio Compression	G711A / U
Two-way audio	-
Interfaces	
Network	RJ45
Video Output	-
Audio line in	1CH audio input
Audio line out	-
Alarm Input	-
Alarm Output	-
Storage	
SD card	Built-in micro SD card slot; up to 128GB
Network remote storage	Yes
Hardware Reset	Yes

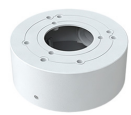
Functions	
Remote Monitoring	Web browsing,CMS remote control
Online Connection	Support simultaneous monitoring for up to 3 users Support multi-stream real time transmission
Network Protocol	UDP, IPv4, IPv6, DHCP, NTP, RTSP, PPPoE, DDNS, SMTP, FTP, SNMP, HTTP, 802.1x, UPnP, HTTPs, QoS
Interface Protocol	ONVIF
Smart Alarm	Motion detection; SD card full; SD card error
Intelligent Analytics	Exception,Line Crossing,Intrusion
General function	Watermark, video mask, heartbeat, password protection
PoE	Yes
Others	
Power Supply	DC12V / PoE
Power Consumption	< 5W
Operating Environment	- 30 ° C ~ 60 ° C (-22° F~140° F) Humidity: less than 95 % (non-condensing)
Dimensions	Φ 74.5 × 167.5 mm
Weight	Approx. 390g
Installation	Ceiling mounting (wall mounting available with the junction box and bracket)
Ingress Protection	IP67
Accessories	



B627



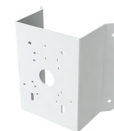
B640



B639



B615



B616



B628